



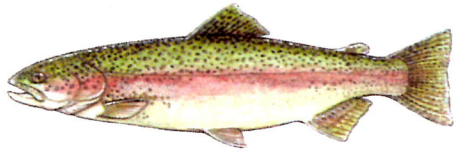
Pond and Stream Study Guide

Interpreting Physical and Chemical Factors

Water Temperature and Fish—Fish Commonly Found in Aquatic Field Studies and Temperature Preferences

COLDWATER FISH

Fish that require water temperatures **less than 70 degrees** to grow and reproduce.



Rainbow Trout



Brown Trout



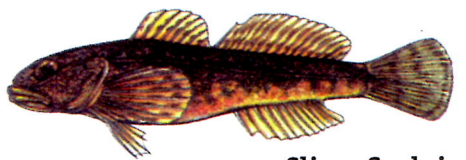
Brook Trout



Blacknose Dace



Longnose Dace



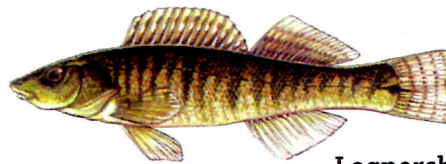
Slimy Sculpin

COOLWATER FISH

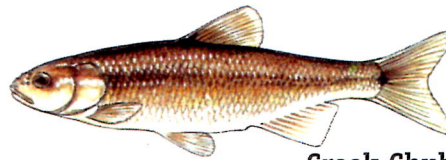
Fish that require temperatures **higher than 65 degrees but less than 75 degrees** to grow and reproduce.



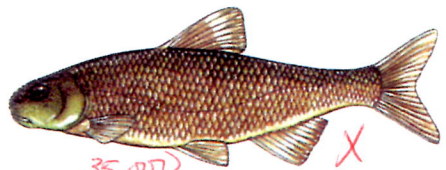
Fallfish



Logperch



Creek Chub



Common Shiner



White Sucker



Smallmouth Bass

WARMWATER FISH

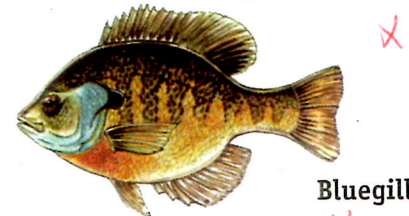
Fish that require water temperatures **higher than 75 degrees** to grow and reproduce.



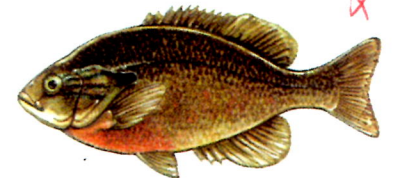
Margined Madtom



Largemouth Bass



Bluegill



Redbreast Sunfish



Rock Bass



Brown Bullhead



Channel Catfish

Species shown are not in proportion to each other, but are enlarged to facilitate identification.